

DS 34-P series

A) DS 34 MDW-P with torque transducer



Type	Max. torque Nm	Application area Nm	Max. speed rpm	Angle resolution Degree [°]	Article number
DS 34 / 025 MDW-P	2,5	0,5 – 2,5	880	0,1	DS-2342025
DS 34 / 05 MDW-P	5	1 – 5	880	0,1	DS-2342050
DS 34 / 10 MDW-P	10	2 – 10	1540	0,1	DS-2342100
DS 34 / 15 MDW-P	15	3 – 15	1540	0,1	DS-2342150

Torque accuracy 0,5 %, torque tolerance better 5 % according to ISO 5393

B) DS 34 SA-P without torque transducer



Type	Max. torque Nm	Application area Nm	Max. speed rpm	Angle resolution Degree [°]	Article number
DS 34 / 025 SA-P	2,5	0,5 – 2,5	880	3,3	DS-2343025
DS 34 / 05 SA-P	5	1 – 5	880	3,3	DS-2343050
DS 34 / 10 SA-P	10	2 – 10	1540	1,7	DS-2343100
DS 34 / 15 SA-P	15	3 – 15	1540	1,7	DS-2343150

Torque accuracy 5 %

C) Spring output



Type	Article number
Spring output 30 mm	DS-2403025
Spring output 30 mm with depth initiator	DS-2403045
Spring output 50 mm	DS-2403030
Spring output 50 mm with depth initiator	DS-2403050

1) Square drive 1/4"



Type	Article number
Square drive 1/4"	DS-2403715

2) Square drive 3/8"



Type	Article number
Square drive 3/8"	DS-2403720

3) Hexagonal quick change chuck D6,3



Type	Article number
Bit shaft precision-guide 13 mm	DS-2403705
Bit shaft precision-guide 24 mm	DS-2403710

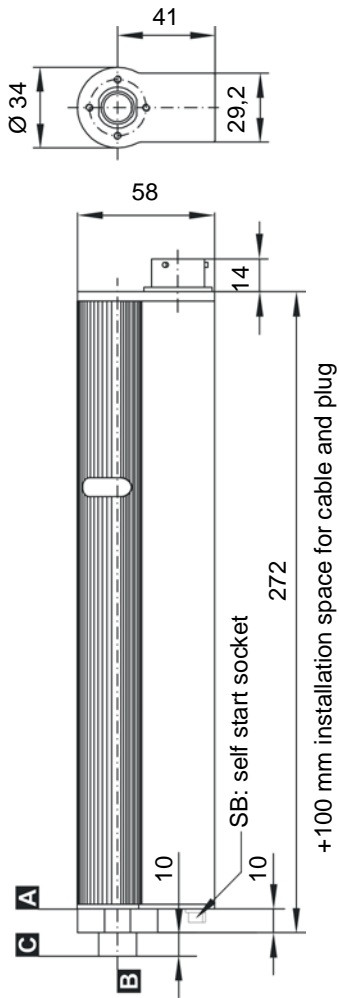
Cable

Cable for interconnection between nutrunner and control system

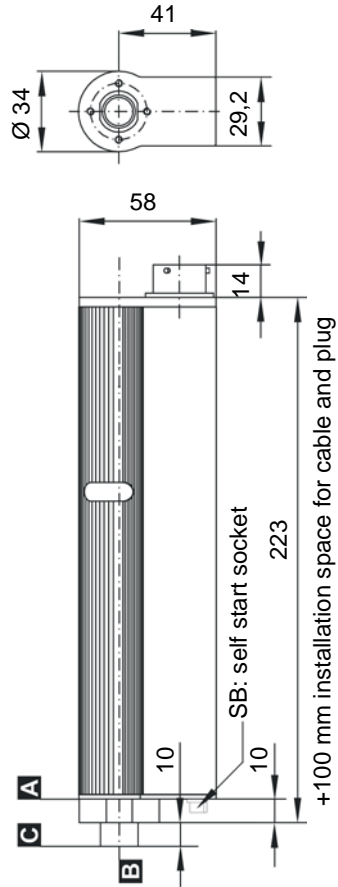
Type	Cable length	Article number
Interconnecting cable DS34 / DS44 / SMP300 DSP05	5 m	MK-2409005
Interconnecting cable DS34 / DS44 / SMP300 DSP10	10 m	MK-2409010
Interconnecting cable DS34 / DS44 / SMP300 DSP15	15 m	MK-2409015
Interconnecting cable DS34 / DS44 / SMP300 DSP05 - angled 90° right	5 m	MK-2409105
Interconnecting cable DS34 / DS44 / SMP300 DSP10 - angled 90° right	10 m	MK-2409110
Interconnecting cable DS34 / DS44 / SMP300 DSP15 - angled 90° right	15 m	MK-2409115
Interconnecting cable DS34 / DS44 / SMP300 DSP05 - angled 90° left	5 m	MK-2409205
Interconnecting cable DS34 / DS44 / SMP300 DSP10 - angled 90° left	10 m	MK-2409210
Interconnecting cable DS34 / DS44 / SMP300 DSP15 - angled 90° left	15 m	MK-2409215

Technical drawings DS 34-P series

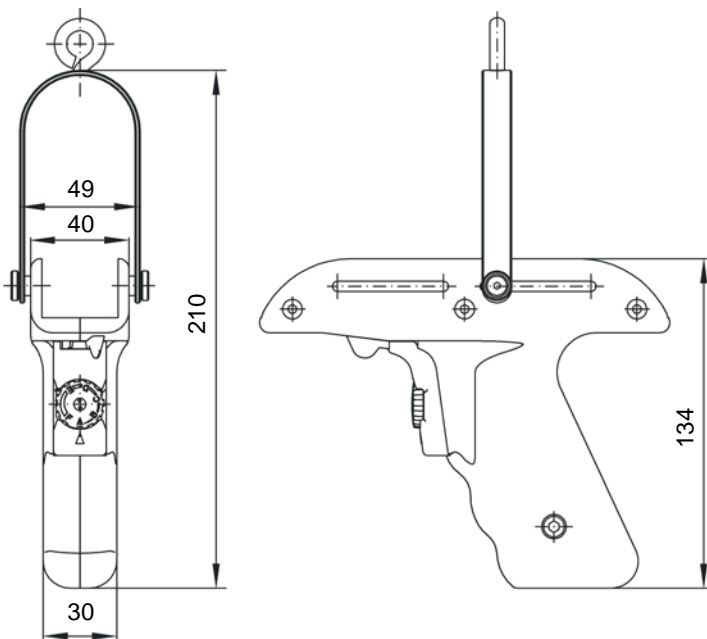
DS 34 MDW



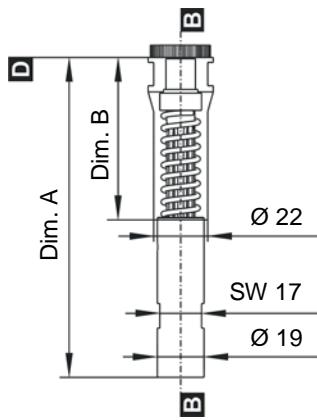
DS 34 SA



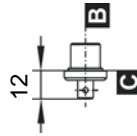
Pistol grip



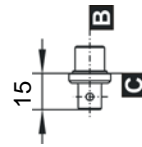
Spring output



Square drive DIN 3121 F6,3



Square drive DIN 3121 F10

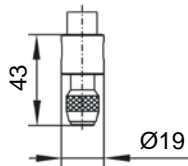
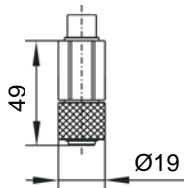


Spring deflexion	Dimension A mm	Dimension B mm
30 mm	130	66
50 mm	150	86

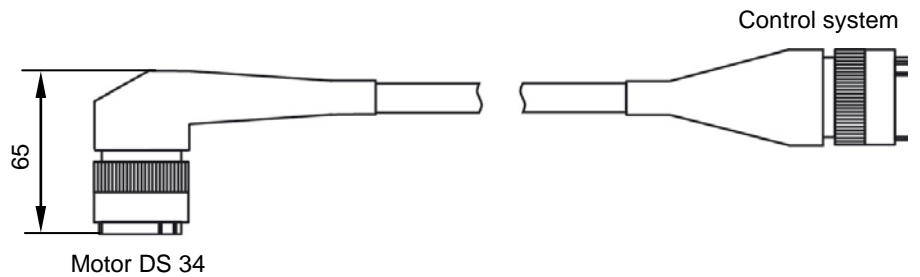
Hexagonal quick change chuck DIN 3126 D6,3

Bit shaft precision-guide 24 mm

Bit shaft precision-guide 13 mm



Interconnecting cable 90° angled



Connector plug 90° left

Connector plug 90° right

