



ToolControl

## SOCKET BOXES

The intelligent ToolControl recognises if a tool (e.g. bit, nut) is taken out. Based on this, it then automatically calls up the correct sequence program. By external presetting the ToolControl shows the assembler the tool which at the moment is required in the assembly process.

The connected socket boxes are identified from the DSM control system and communicate via the DSM systembus as well as via Profibus by external presetting using a foreign controller.

ToolControl is available as base system and as extension system. By cross linking of several units the base system is combined with the corresponding number of extensions. The identification and classification is made automatically. The system can be extended to up to 32 sockets.

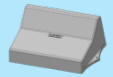
The tool inserts, manufactured out of plastic, are part of the shipment. To assure a mix-proof handling, an adjustment of the inserts to the tool is necessary. This can either be made by the customer or by DSM.

### Features

- Aluminium pressure die housing with mounting plate
- If a tool is taken out, ToolControl automatically calls up the correct program or external preset for tool removal
- Processor monitored tool removal
- Status reports via LCD plain text display
- LED Status indication for each tool
- Available with two, four or eight tool inserts
- Cascatable up to max. 32 tools
- Customised tool inserts (inserts made of synthetic material)
- USB port for the interface configuration, software included in delivery
- System bus interface for communication with control system (Basic, Classic, Pro)
- Extension interface for further modules
- Profibus interface, Ethernet interface for the integration in a PLC

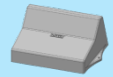


### ToolControl Base system with plain text display



Type	Tool inserts	Outside diameter tool	Article number
ToolControl TC2 socket box	2	max. 72 mm	<b>DSM-200200</b>
ToolControl TC4 socket box	4	max. 40 mm	<b>DSM-200400</b>
ToolControl TC8 socket box	8	max. 15 mm	<b>DSM-200800</b>

### ToolControl Extension unit without plain text display



Type	Tool inserts	Outside diameter tool	Article number
ToolControl TC2-E socket box	2	max. 72 mm	<b>DSM-200250</b>
ToolControl TC4-E socket box	4	max. 40 mm	<b>DSM-200450</b>

### ToolControl interconnecting cable

Type	Cable length	Article number
Cable for interconnection between base system and extension unit	0,8 m	<b>DSM-200176</b>

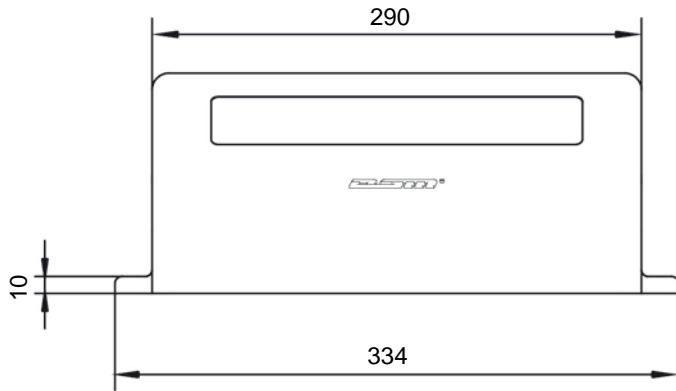
Extension unit contains the interconnecting cable

### Systembus Accessories

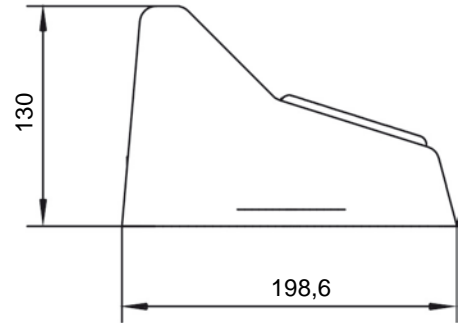
Type	Article number
System bus cable 1 m	<b>MS-1003001</b>
System bus cable 2 m	<b>MS-1003002</b>
System bus cable 5 m	<b>MS-1003005</b>
System bus terminating resistor	<b>MS-1003044</b>
T-piece for system bus connection	<b>DSM-200722</b>
Y-piece for system bus connection	<b>DSM-200724</b>

# Technical drawings ToolControl

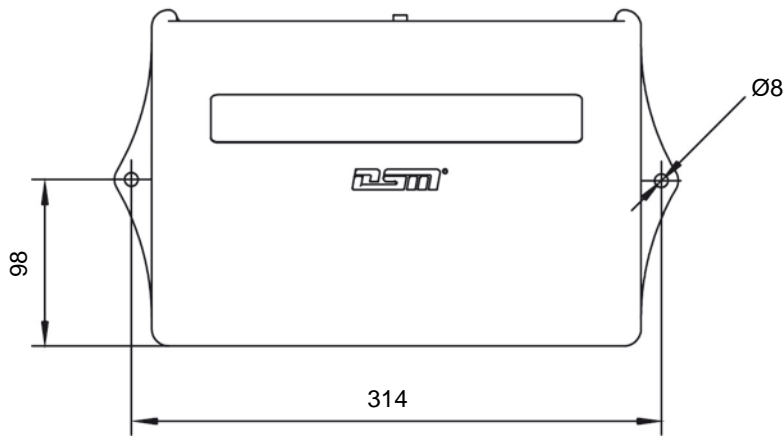
Front view



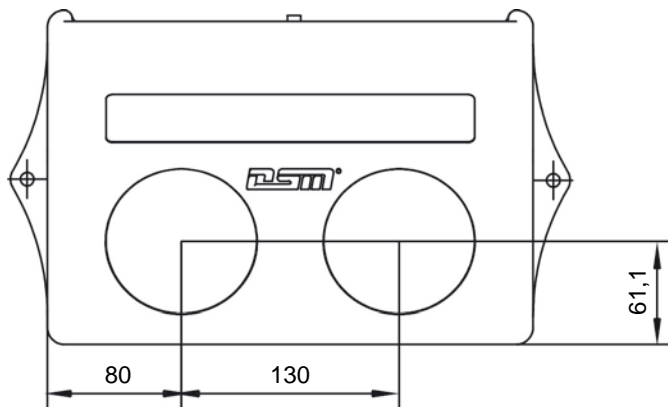
Side view



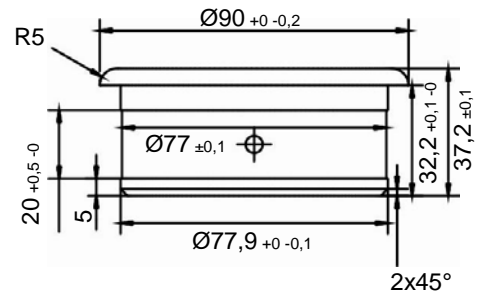
Top view



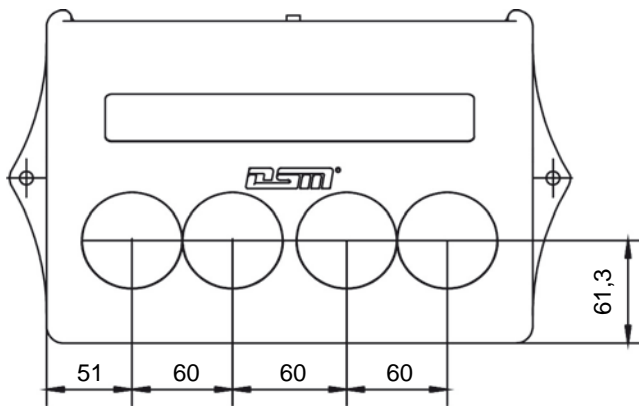
Tool places TC2



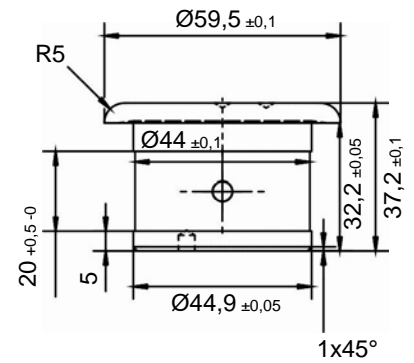
Tool insert TC2



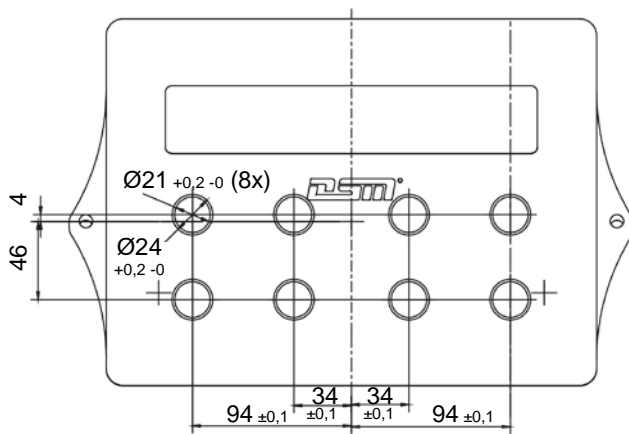
**Tool places TC4**



**Tool insert TC4**



**Tool places TC8**



**Tool insert TC8**

