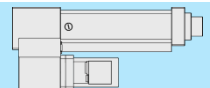


SMP 400 / 10 200 V2 DR 00 00						
Optionen	05 10	100 200 400	V2 MHB	DR	00 00	00
00 = Standard				SMP Standard		
Serien- bezeichnung / Baugröße	Kraftsensor	Fahrweg	Antrieb	Kraftmessung	Zusätzliche Ausstattung	Werkzeug- aufnahme
A	B	1,2,3	A, C	A	A	A

SMP 400 series

A) SMP 400 basic version Press 1) with 100 mm, 2) with 200 mm, 3) with 400 mm stroke



Type	Stroke mm	Max. speed mm/s	Article number
SMP 400 / XX 100 V2 DR 00 00	100	200	SMP-403001
SMP 400 / XX 200 V2 DR 00 00	200	200	SMP-403002
SMP 400 / XX 400 V2 DR 00 00	400	200	SMP-403004

Resolution length (stroke) measurement 0,003 mm, length (stroke) repeat accuracy 0,01 mm by about 20 mm/s
Tool bracket with mounting drill holes

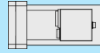
B) SMP 400 execution force sensor 5 kN / 10 kN



Type	Max. force kN	Application area kN	Article number
Force sensor 5 kN for SMP 400	5	1 - 5	SMP-400005
Force sensor 10 kN for SMP 400	10	2 - 10	SMP-400010

Force accuracy 1 %

C) Motor force-hold-break



Type	Article number
Motor force-hold-break MHB	SMP-

Accessories

Type	Article number
Portal frame for SMP 400 (according to customer specification)	SMP-4008000
C-frame for SMP 400 (according to customer specification)	SMP-4008500

Cable

Cables for interconnection between press-in unit and control system

Type	Cable length	Article number
Cable set DS57 / QMP80 / SMP400 DSP05	5 m	MK-0809005
Cable set DS57 / QMP80 / SMP400 DSP10	10 m	MK-0809010
Cable set DS57 / QMP80 / SMP400 DSP15	15 m	MK-0809015
Cable set DS57 / QMP80 / SMP400 DSP05 - with shielding	5 m	MK-0809105
Cable set DS57 / QMP80 / SMP400 DSP10 - with shielding	10 m	MK-0809110
Cable set DS57 / QMP80 / SMP400 DSP15 - with shielding	15 m	MK-0809115

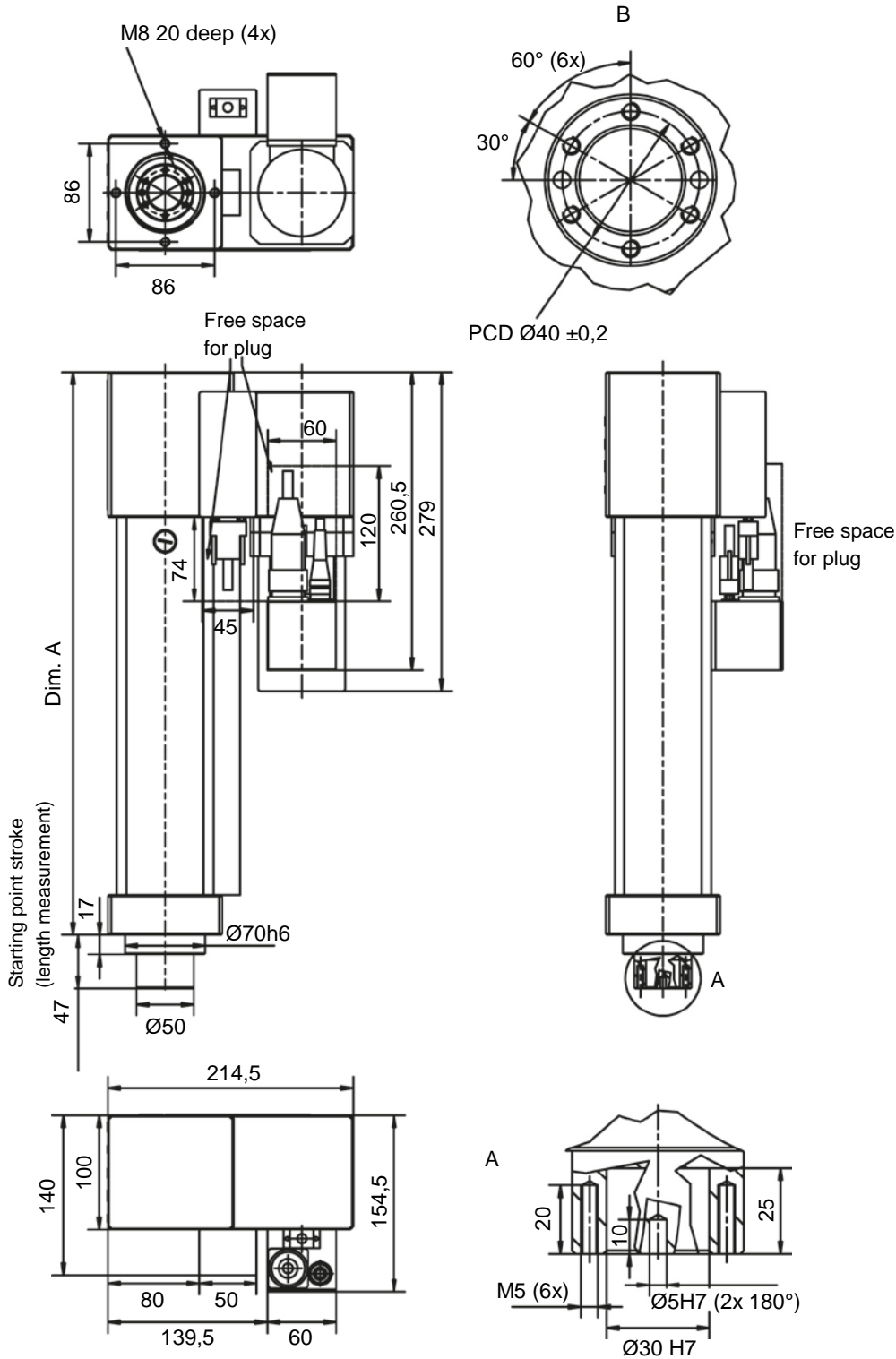
Maintenance accessories

QMP / SMP Service package

Type	Article number
Lubrication set (grease gun, armoured hose, grease cartridge and lubrication tube set)	DSM-281990

Technical drawings SMP 400 series

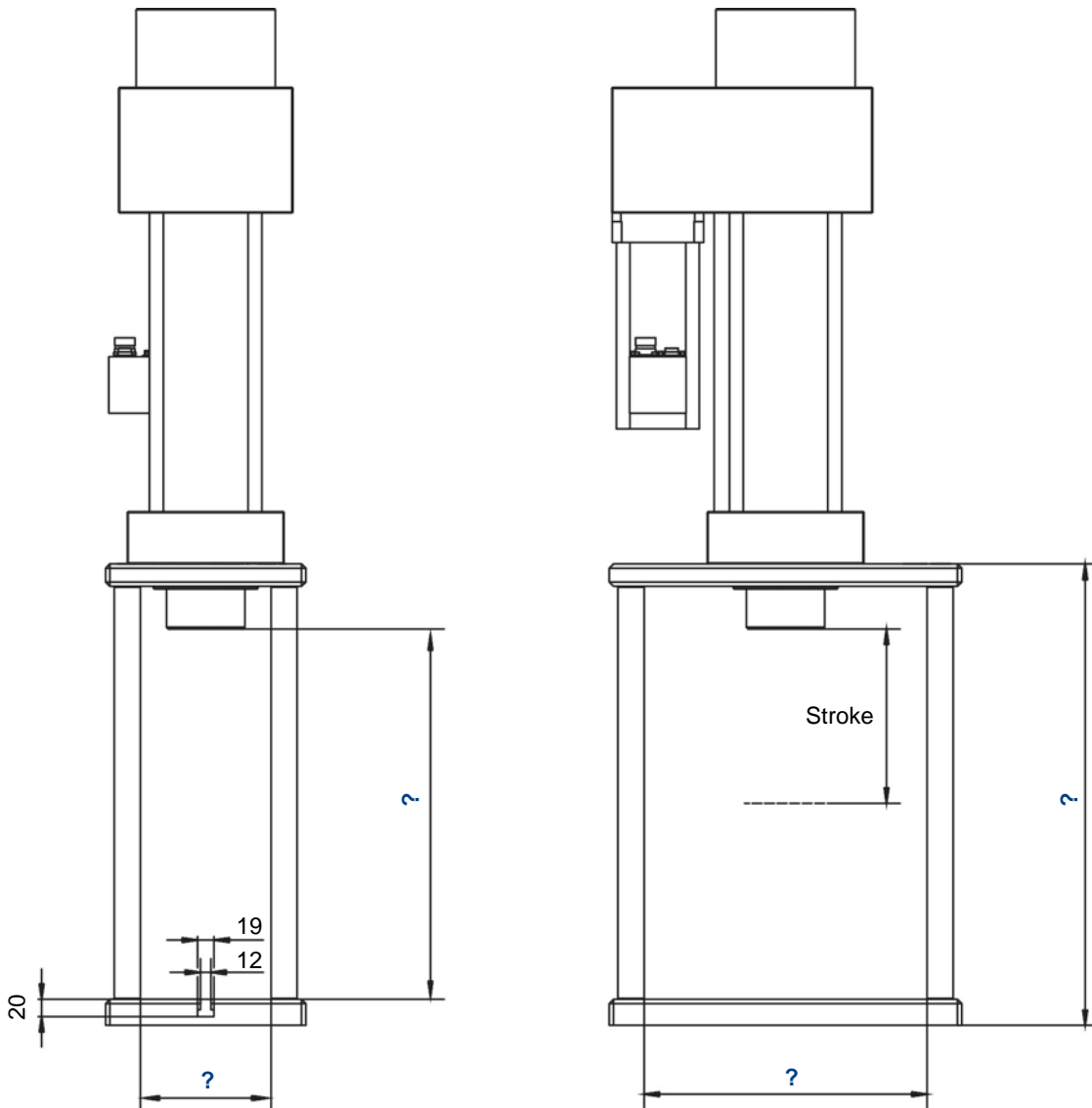
SMP 400 /02/05/10 V2 (Motor offset)



Typ	A mm
SMP 400 V2 100 mm stroke	392 ±2
SMP 400 V2 200 mm stroke	492 ±2
SMP 400 V2 400 mm stroke	692 ±2

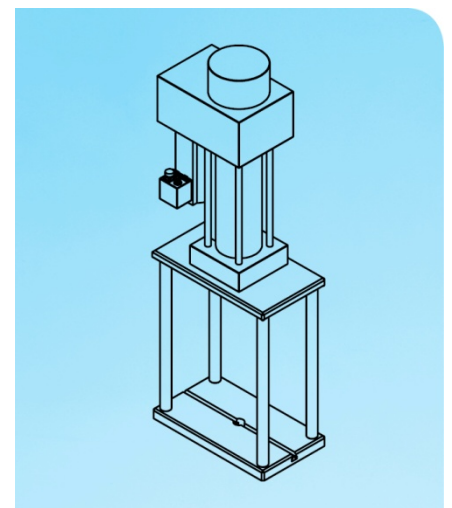
Portal frame

for press-in units of the QMP/SMP series



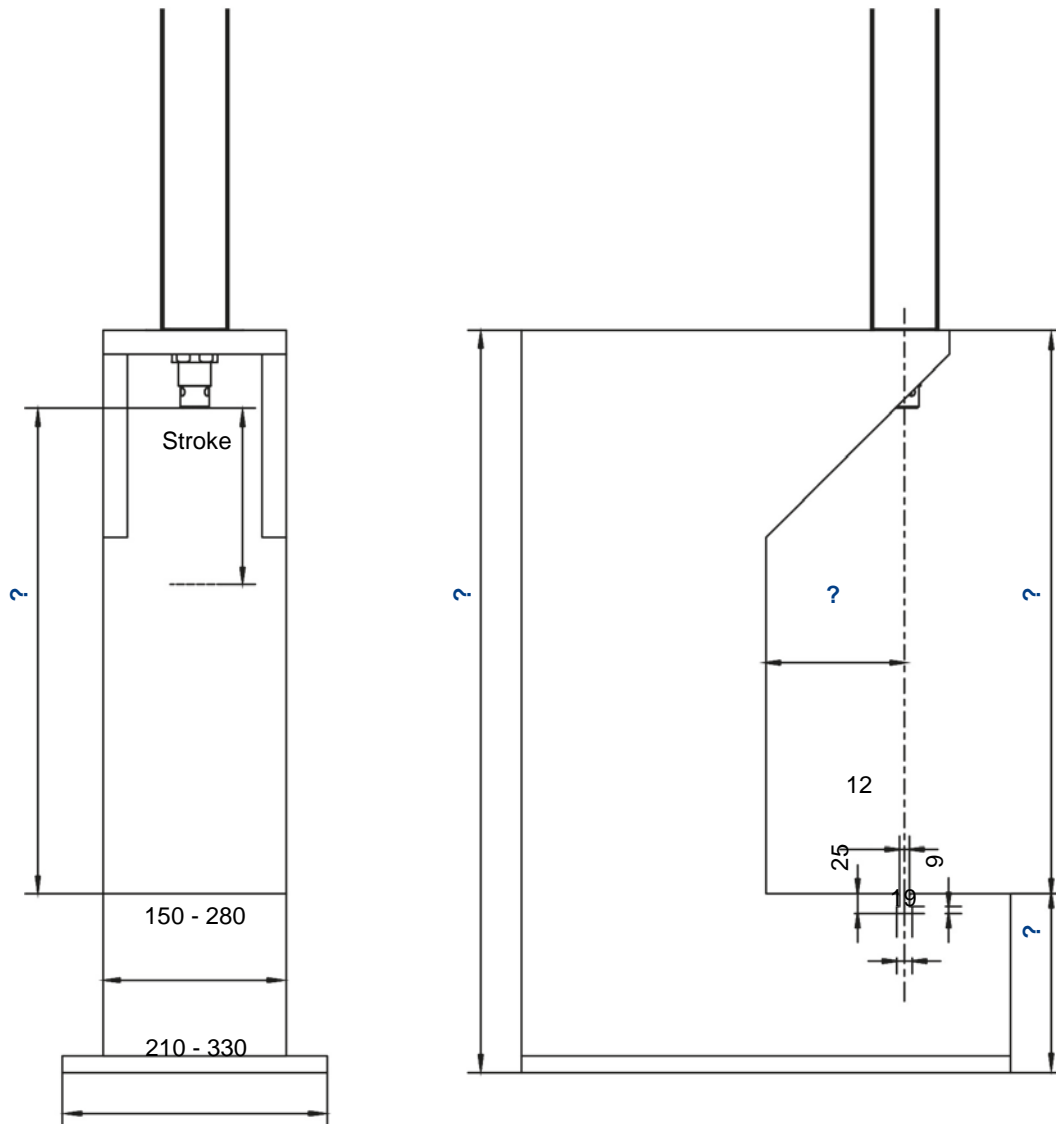
Portal frame, manufactured acc. to customers specification. Depending on the selected press, the dimensions marked with a question mark, can be defined individually.

Please gather dimensions of the press-in unit from the corresponding drawing.



C-frame

for press-in units of the QMP/SMP series



C-frame, manufactured acc. to customers specification. Depending on the selected press, the dimensions marked with a question mark, can be defined individually.

Please gather dimensions of the press-in unit from the corresponding drawing.

