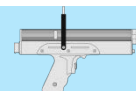


DS 44-P series

A) DS 44 MDW-P with torque transducer



Type	Max. torque Nm	Application area Nm	Max. speed rpm	Angle resolution Degree [°]	Article number
DS 44 / 025 MDW-P	2,5	0,5 – 2,5	1300	0,1	DS-2442025
DS 44 / 05 MDW-P	5	1 – 5	1300	0,1	DS-2442050
DS 44 / 10 MDW-P	10	2 – 10	900	0,1	DS-2442100
DS 44 / 20 MDW-P	20	4 – 20	530	0,1	DS-2442200
DS 44 / 35 MDW-P	35	7 – 35	480	0,1	DS-2442350

Torque accuracy 0,5 %, torque tolerance better 5 % according to ISO 5393

B) DS 44 SA-P without torque transducer



Type	Max. torque Nm	Application area Nm	Max. speed rpm	Angle resolution Degree [°]	Article number
DS 44 / 05 SA-P	5	1 – 5	1300	3,3	DS-2443050
DS 44 / 10 SA-P	10	2 – 10	900	2,3	DS-2443100
DS 44 / 20 SA-P	20	4 – 20	530	1,4	DS-2443200
DS 44 / 35 SA-P	35	7 – 35	480	1,0	DS-2443350

Torque accuracy 5 %

C) Spring output



Type	Article number
Spring output 30 mm	DS-2403025
Spring output 30 mm with depth initiator	DS-2403045
Spring output 50 mm	DS-2403030
Spring output 50 mm with depth initiator	DS-2403050

1) Square drive 1/4"



Type	Article number
Square drive 1/4"	DS-2403715

2) Square drive 3/8"



Type	Article number
Square drive 3/8"	DS-2403720

3) Hexagonal quick change chuck D6,3



Type	Article number
Bit shaft precision-guide 13 mm	DS-2403705
Bit shaft precision-guide 24 mm	DS-2403710

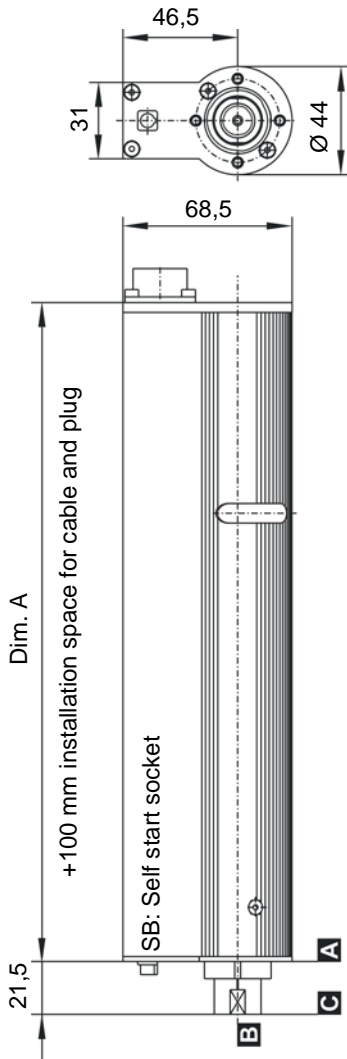
Cable

Cable for interconnection between nutrunner and control system

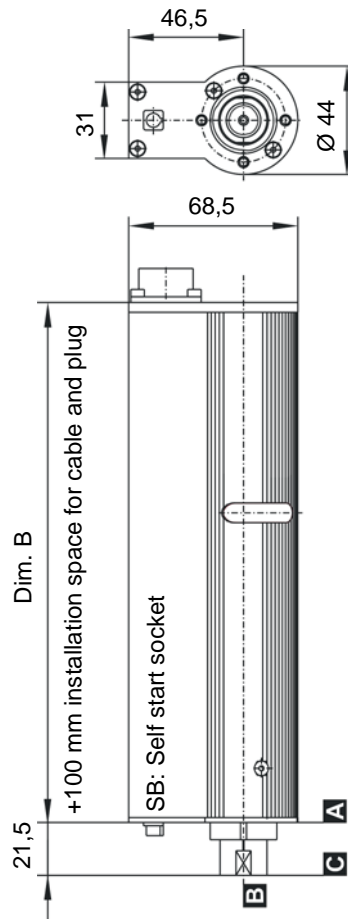
Type	Cable length	Article number
Interconnecting cable DS34 / DS44 / SMP300 DSP05	5 m	MK-2409005
Interconnecting cable DS34 / DS44 / SMP300 DSP10	10 m	MK-2409010
Interconnecting cable DS34 / DS44 / SMP300 DSP15	15 m	MK-2409015
Interconnecting cable DS34 / DS44 / SMP300 DSP05 - angled 90° right	5 m	MK-2409105
Interconnecting cable DS34 / DS44 / SMP300 DSP10 - angled 90° right	10 m	MK-2409110
Interconnecting cable DS34 / DS44 / SMP300 DSP15 - angled 90° right	15 m	MK-2409115
Interconnecting cable DS34 / DS44 / SMP300 DSP05 - angled 90° left	5 m	MK-2409205
Interconnecting cable DS34 / DS44 / SMP300 DSP10 - angled 90° left	10 m	MK-2409210
Interconnecting cable DS34 / DS44 / SMP300 DSP15 - angled 90° left	15 m	MK-2409215

Technical drawings DS 44-P series

DS 44 MDW

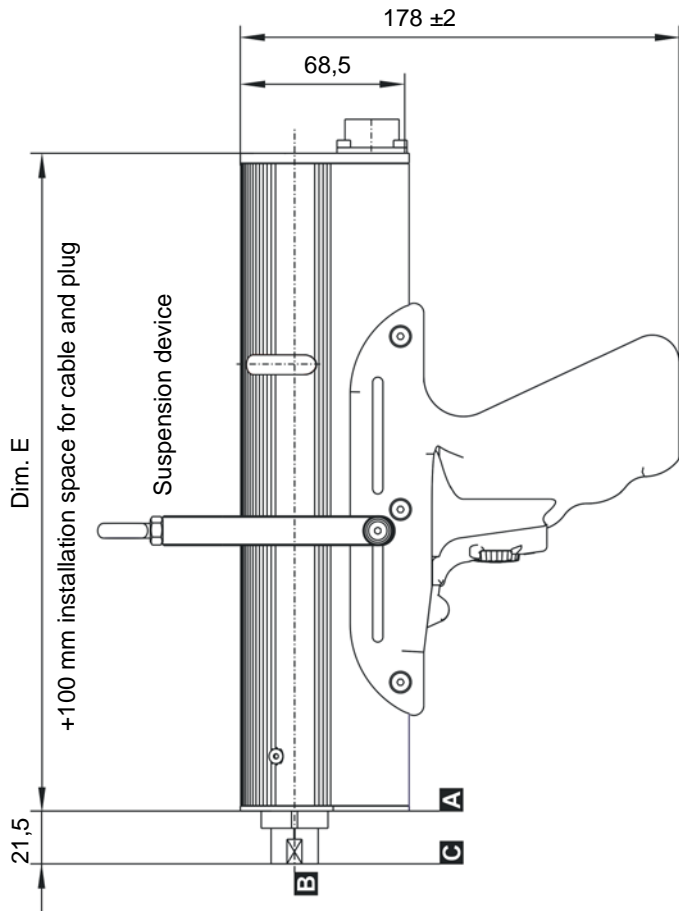
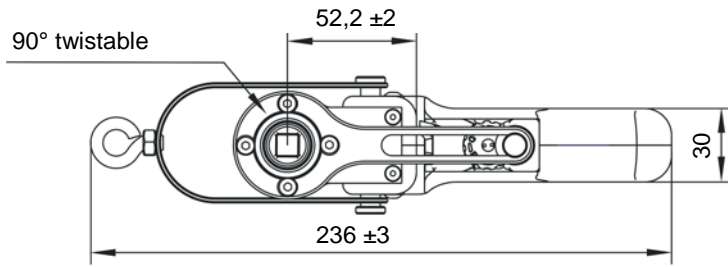


DS 44 SA



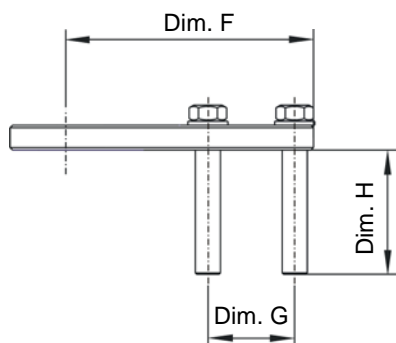
Type	Dimension A mm	Dimension B mm
DS 44 / 05 / 10 / 20	267,5	211,5
DS 44 / 35	348,5	292,5

Pistol grip



Counter bracket for pistol grip nutrunner

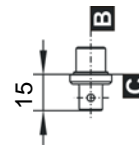
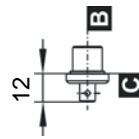
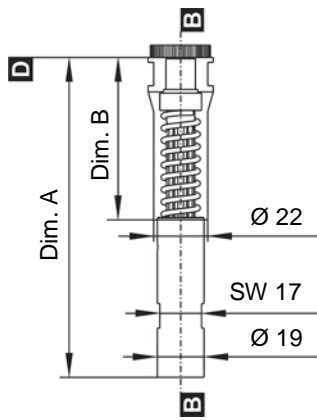
Dimensions according to customer requirement



Spring output

Square drive DIN 3121 F6,3

Square drive DIN 3121 F10

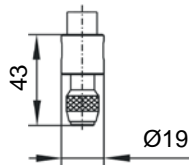
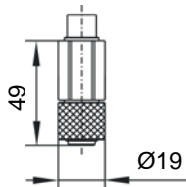


Spring deflexion	Dimension A mm	Dimension B mm
30 mm	130	66
50 mm	150	86

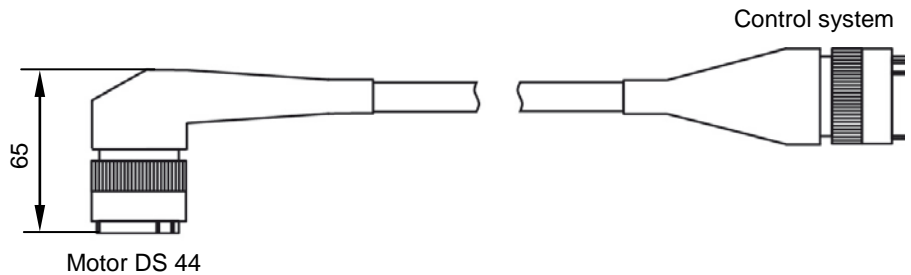
Hexagonal quick change chuck DIN 3126 D6,3

Bit shaft precision-guide 24 mm

Bit shaft precision-guide 13 mm



Interconnecting cable 90° angled



Connector plug 90° left

Connector plug 90° right

