

DS 26 series

A) DS 26 MDW with torque transducer



Type	Max. torque Nm	Application area Nm	Max. speed rpm	Angle resolution Degree [°]	Article number
DS 26 / 005 MDW	0,5	0,05 – 0,5	1450	3,7	DS-2260005
DS 26 / 01 MDW	1	0,2 – 1	1450	3,7	DS-2260010
DS 26 / 02 MDW	2	0,4 – 2	1020	2,6	DS-2260020
DS 26 / 04 MDW	4	0,8 – 4	400	1,0	DS-2260040

Torque accuracy 0,5 %, torque tolerance better 5 % according to ISO 5393

B) DS 26 SA without torque transducer

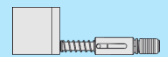


Type	Max. torque Nm	Application area Nm	Max. speed rpm	Angle resolution Degree [°]	Article number
DS 26 / 005 SA	0,5	0,05 – 0,5	1700	4,3	DS-2261005
DS 26 / 01 SA	1	0,2 – 1	1700	4,3	DS-2261010
DS 26 / 02 SA	2	0,4 – 2	820	2,1	DS-2261020
DS 26 / 04 SA	4	0,8 – 4	400	1,0	DS-2261040

Torque accuracy 5 %

C) Mounting flange

Type	Article number
Mounting flange	DS-2263000

D) Output offset max. 2 Nm

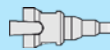
Type	Article number
Output offset V1	DS-2263005

E/F) Spring output

Type	Article number
Spring output 20 mm	DS-2263010
Spring output 50 mm	DS-2263015

G) Self start output

Type	Article number
Self start with 5 mm spring deflexion	DS-2263020

H) Vacuum screw-retainer

Type	Article number
With electric supply unit	DS-2263895
With pneumatic supply unit	DS-2263896

I) Angle head

Type	Article number
Angle head (D6,3)	DS-2263025
Torque tolerance better 8 % according to ISO 5393	

1) Hexagon drive 1/4"

Type	Article number
Hexagon drive 1/4"	DS-2263725

2) Square drive 1/4"

Type	Article number
Square drive 1/4"	DS-2263730

3) Hexagonal quick change chuck B3

Type	Article number
Hexagonal quick change chuck B3	DS-2263720

4) Hexagonal quick change chuck B5,5

Type	Article number
Hexagonal quick change chuck B5,5	DS-2263715

5) Hexagonal quick change chuck D6,3

Type	Article number
Bit shaft precision-guide 13 mm	DS-2263705
Bit shaft precision-guide 24 mm	DS-2263710

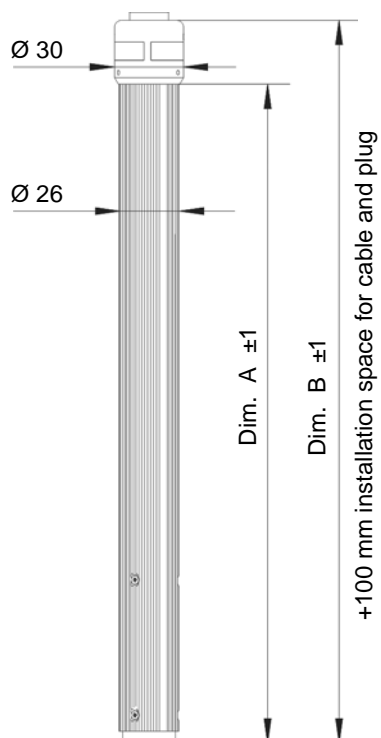
Cable

Cable for interconnection between nutrunner and control system

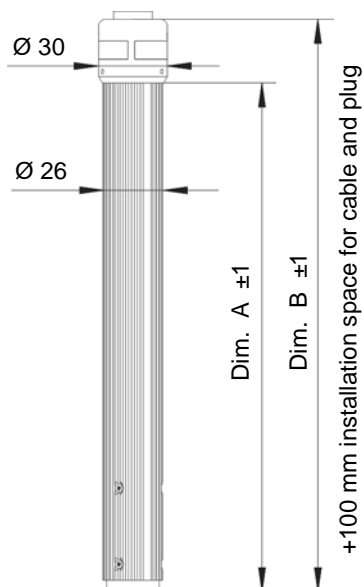
Type	Cable length	Article number
Interconnecting cable DS26 / DSH26 DSP05	5 m	MK-2269005
Interconnecting cable DS26 DSP05 - heavy duty version	5 m	MK-2269105
Interconnecting cable DS26 DSP10 - heavy duty version	10 m	MK-2269110
Interconnecting cable DS26 DSP15 - heavy duty version	15 m	MK-2269115
Interconnecting cable DS26 DSP05 - heavy duty version, angled 90° right	5 m	MK-2269205
Interconnecting cable DS26 DSP10 - heavy duty version, angled 90° right	10 m	MK-2269210
Interconnecting cable DS26 DSP15 - heavy duty version, angled 90° right	15 m	MK-2269215
Interconnecting cable DS26 DSP05 - heavy duty version, angled 90° left	5 m	MK-2269305
Interconnecting cable DS26 DSP10 - heavy duty version, angled 90° left	10 m	MK-2269310
Interconnecting cable DS26 DSP15 - heavy duty version, angled 90° left	15 m	MK-2269315

Technical drawings DS 26 series

DS 26 MDW

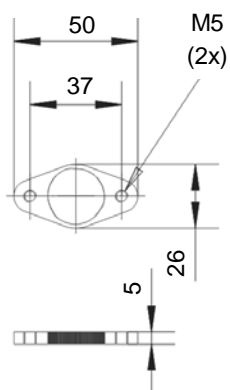


DS 26 SA

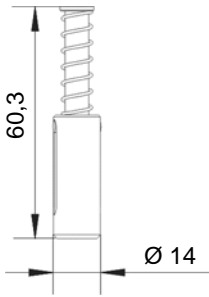


Type MDW	Dim. A mm	Dim. B mm	Type SA	Dim. A mm	Dim. B mm
DS 26 / 005 MDW	217	245	DS 26 / 005 SA	179	207
DS 26 / 01 /02 MDW	235	263	DS 26 / 01 /02 SA	197	225
DS 26 / 04 MDW	242	270	DS 26 / 04 SA	200	228

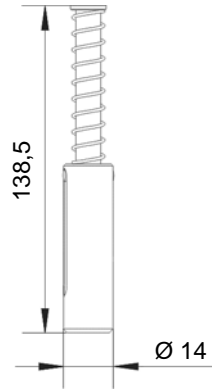
Mounting flange



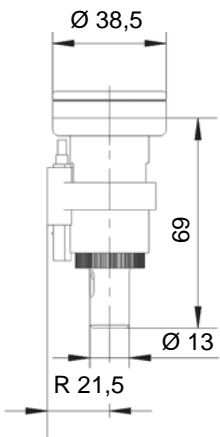
Spring output 20 mm



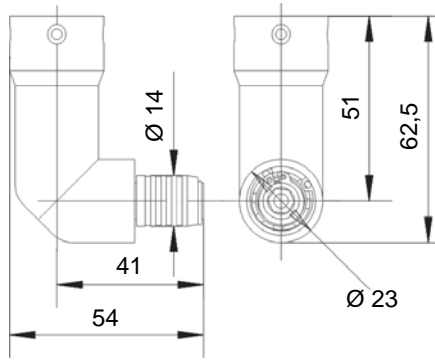
Spring output 50 mm



Self start

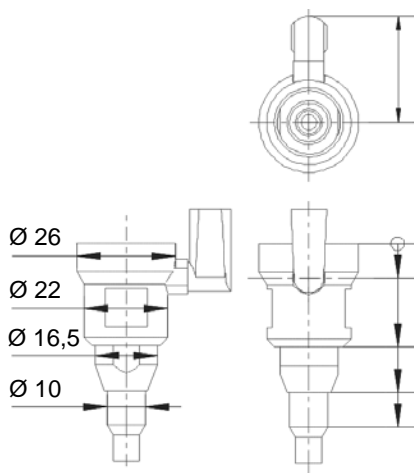


Angle head



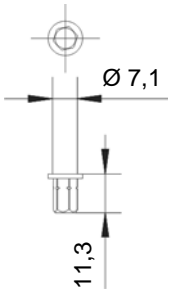
WA with quick change chuck
DIN 3126 D6,3

Vacuum screw-retainer

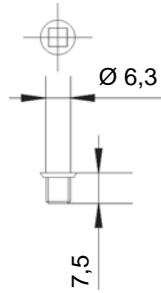


Nozzle to customer requirements

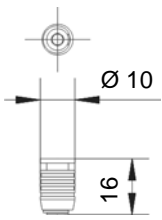
Hexagonal drive 1/4" DIN 3126 C6,3



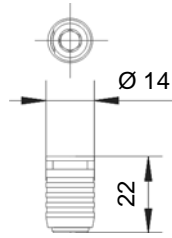
Square drive 1/4" DIN 3121 F6,3



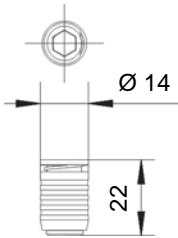
Hexagonal quick change chuck DIN 3126 B3



Hexagonal quick change chuck DIN 3126 B5,5



Hexagonal quick change chuck DIN 3126 D6,3



Interconnecting cable 90° angled

